

# WinCE Touch Driver Installation Guide

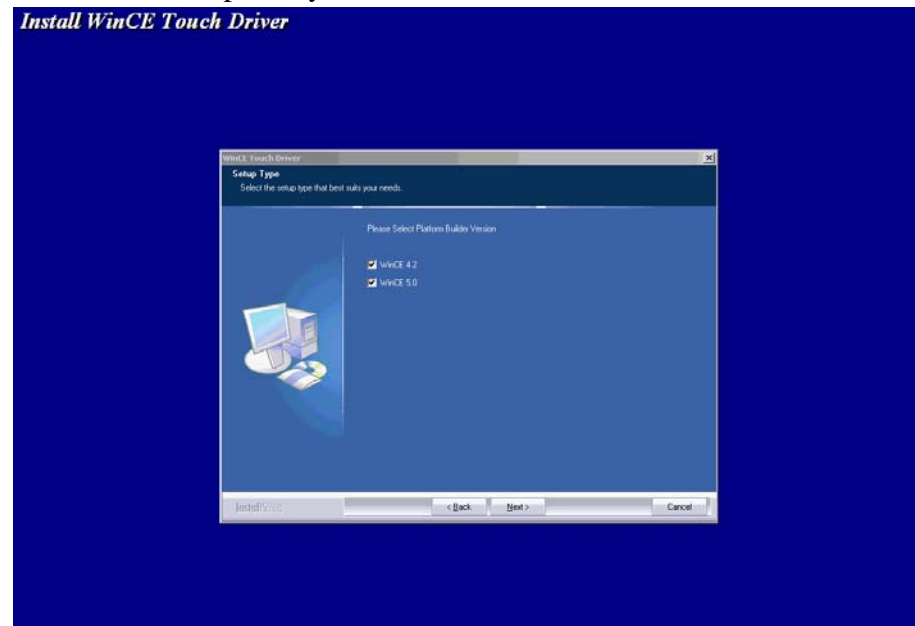
Version: 2.0.14.7405

Operation System: Windows CE .NET (CEPB 4.0/4.1/4.2) 5.0

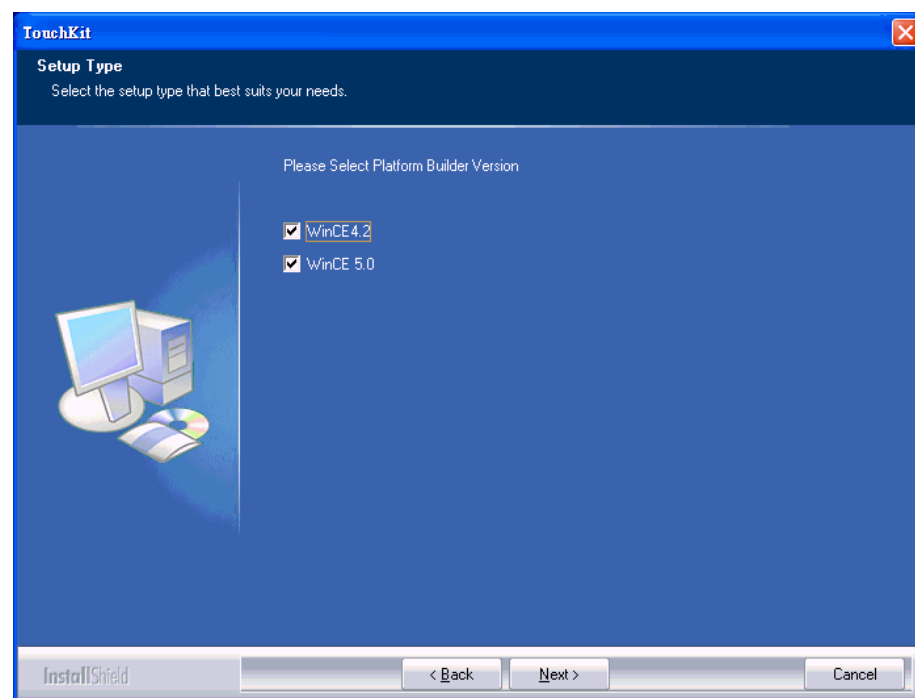
Release Date: 12-19-2006

Before you execute setup.exe, please make sure your platform builder is not launched.

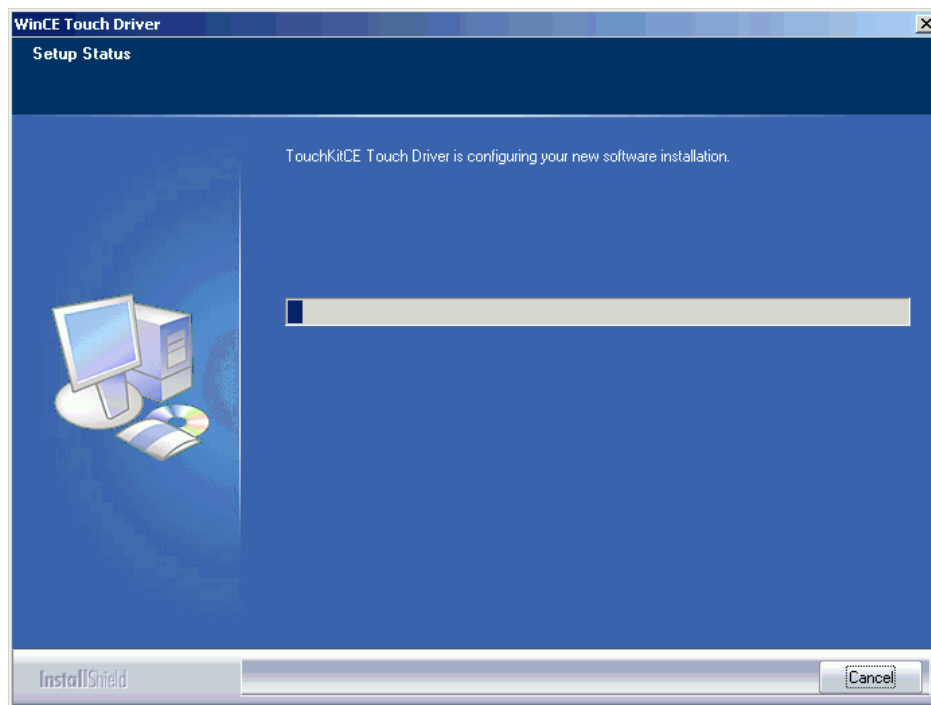
1. Execute setup.exe, you will see the installation window.



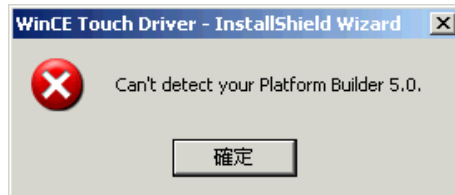
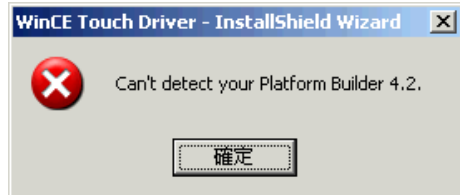
2. Select the platform builder version(s) you want to install.



3. Press Next and you will see the process

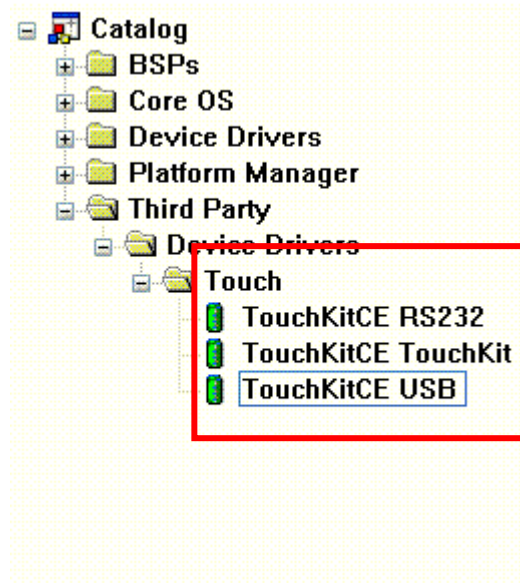


4. If this message occurs, please check whether you have installed platform builder in your operating system.



5. Launch platform builder Windows CE4.2/5.0, check whether there will be three new catalog items under Third Party → Device Drivers → Touch.

Note: If you can not see the newly added catalogs, try to press mouse right button and select Refresh Catalog



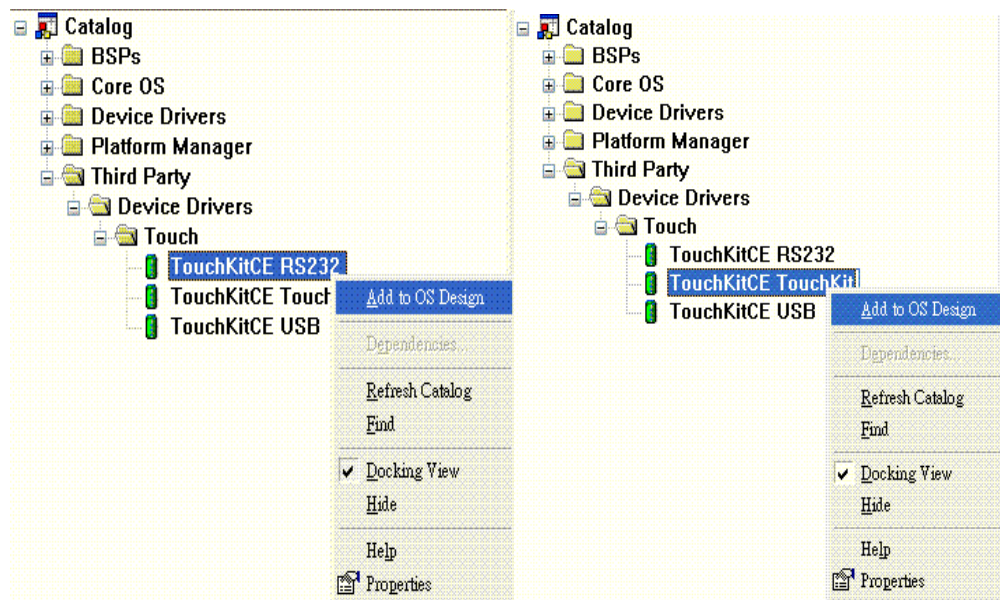
6. Open your workspace. Add catalog items into your OSDesign.  
To add catalog into your OSDesign, simply press right button and select Add to OSDesign

#### [For USB Controller]

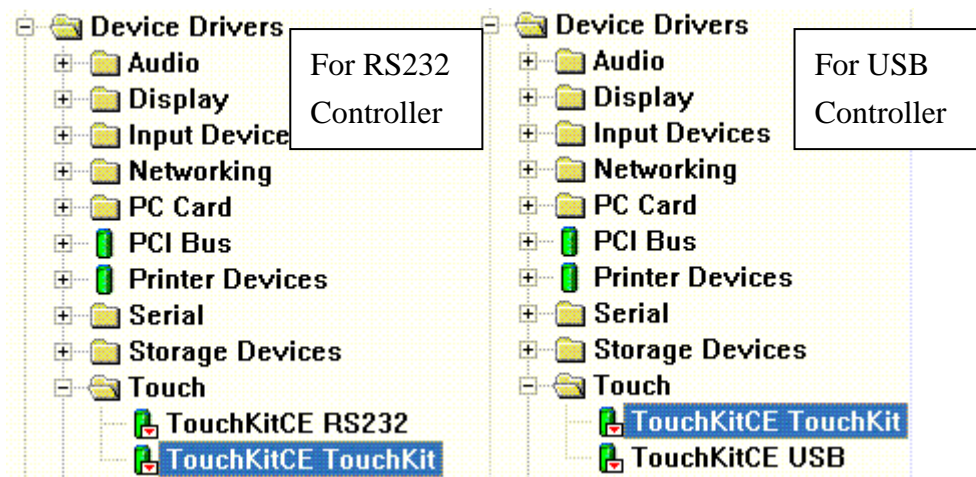
Add **TouchKitCE TouchKit** and **TouchKitCE USB** into your OS Design

#### [For RS232 Controller]

Add **TouchKitCE TouchKit** and **TouchKitCE RS232** into your OS Design



7. After you add catalog items, you will find the items inside your workspace.



8. Language Setting: You can change the registry setting for different language.

For example:

Edit TouchKitCETool.reg in platform builder and add

#include "C:\TouchKitCE\language\_e.reg" for English

For different language, please reference the following table.

Registry File	Target Language
language_e.reg	The English Language Registry Setting
language_tch.reg	The Traditional Chinese Language Registry Setting
language_sch.reg	The Simplified Chinese Language Registry Setting
language_jap.reg	The Japanese Language Registry Setting
language_kor.reg	The Korean Language Registry Setting
language_spa.reg	The Spanish Language Registry Setting
language_ita.reg	The Italian Language Registry Setting
language_ger.reg	The German Language Registry Setting
language_fre.reg	The French Language Registry Setting
language_dut.reg	The Dutch Language Registry Setting

9. Select Build OS → Make Run-Time Image (Build → Make Image for CE4.2) to build the image.

Notes:

1. You can modify registry setting as described below:

[For TouchKit tool] Modify TouchKitCETool.reg:

[HKEY\_LOCAL\_MACHINE\Drivers\TouchKit]

"RBSIZE"=dword:800 → set scale that will be treated as the same point  
x-coordinate regin(pixel) = (RBSize / 65535)\* x-coordinate resolution  
set RBSize = 0 can disable right button

"RBTIME"=dword:FFFFFF → set how long the same point pressed will  
treated as right button. The unit is  $10^{-7}$  second.

"FLAGS"=dword:1 → set 0x1 software filter enable

set 0x3000 update eeprom funtion enable

set 0x100 to enable the check rotation function

"BeepFrequency"=dword:1F4 → Beep Frequency(x86 only)

"BeepTime"=dword:64 → Beep Times(ms)(x86 only)

"ZFilterThreshold"=dword:800

"ZFilterBound"=dword:00100001

"SoundType"=dword:0 → This is the default sound type.

SoundType = 0 is no sound

SoundType = 1 is Beep in touch down.

SoundType = 2 is Beep in lift off.

"NoPostRange"=dword:80

"SECDisable"=dword:1

[For RS232 Controller] Modify TouchKitCE232.reg:

[HKEY\_LOCAL\_MACHINE\Drivers\BuiltIn\TouchKit1]

"Dll"="TouchKit.dll"

"Order"=dword:00000001

"Prefix"="TKT"

"Index"=dword:00000001

"Context"=dword:1; → This is the COM Port index which you used.

[For USB Controller] Select the UHCI or OHCI USB Host Controller driver into your platform which supported by the target device. Check the USB mouse can go well at the same port. Select the "Mouse" into your platform. This can be found in:

"Catalog\Core OS\Windows CE devices\Shell and User Interface\User  
Interface\Mouse"

2. You can uninstall the catalog items in platform builder by execute setup.exe again.